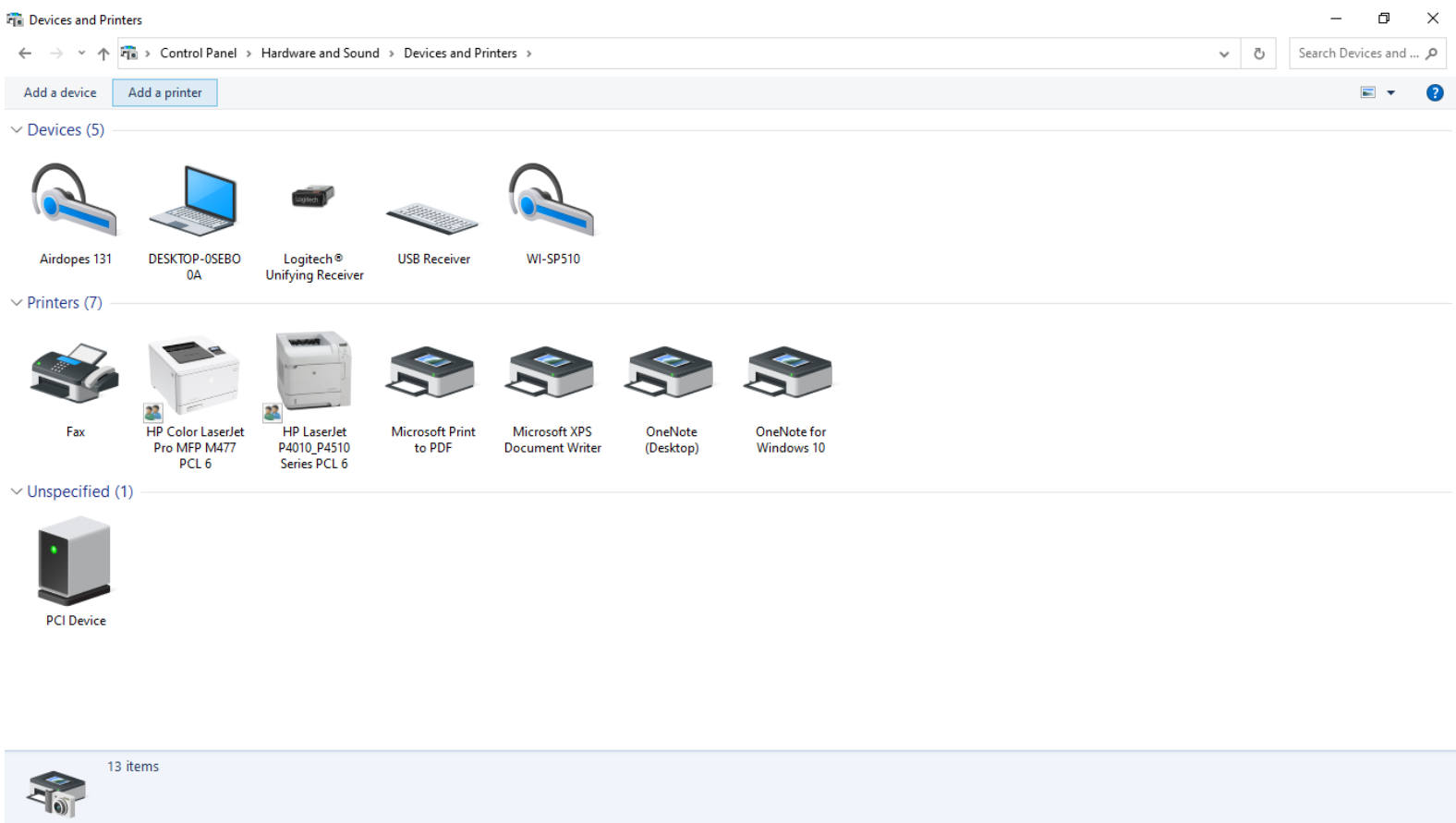
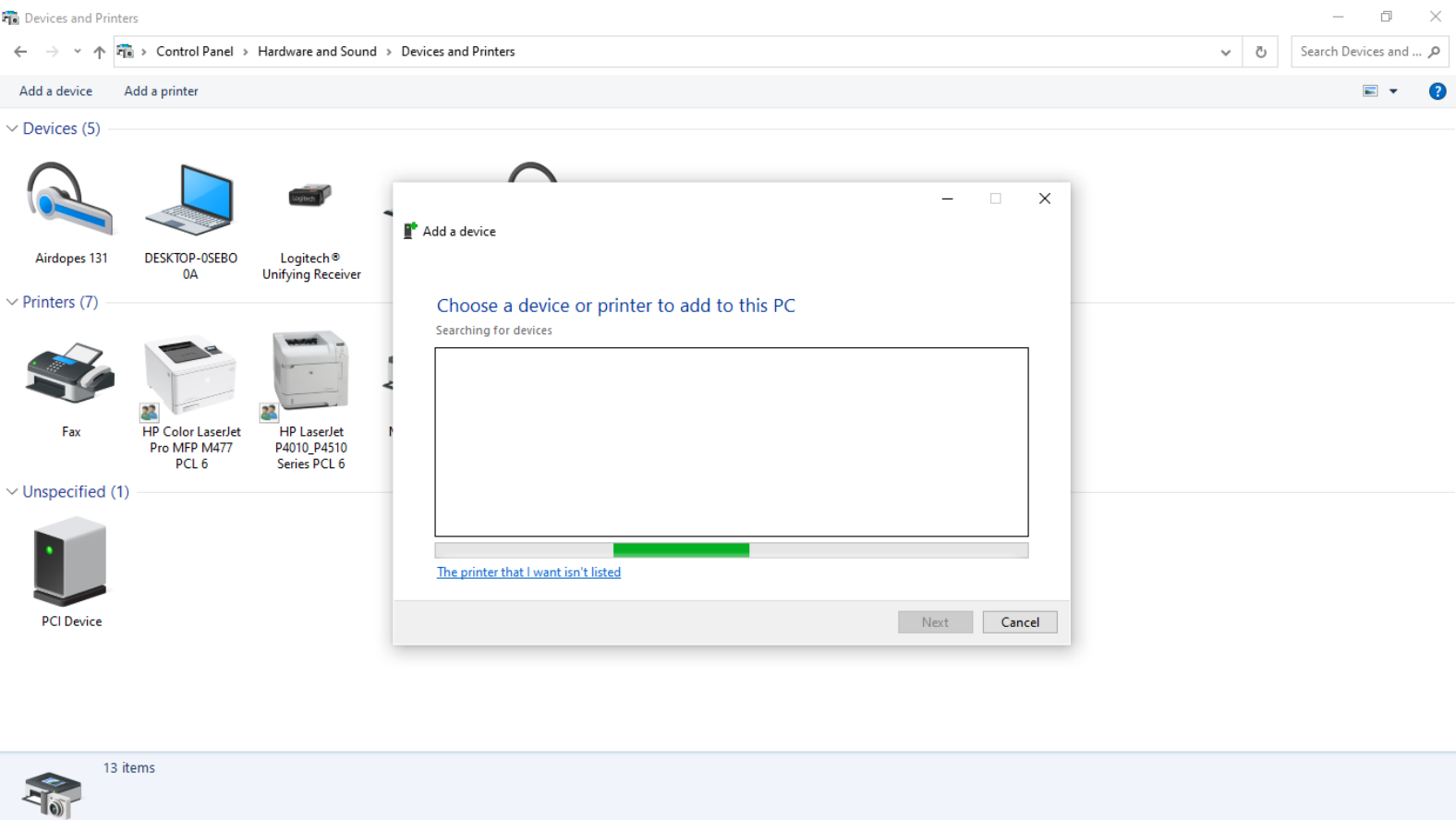


Download the driver of the printer from the PandA website.

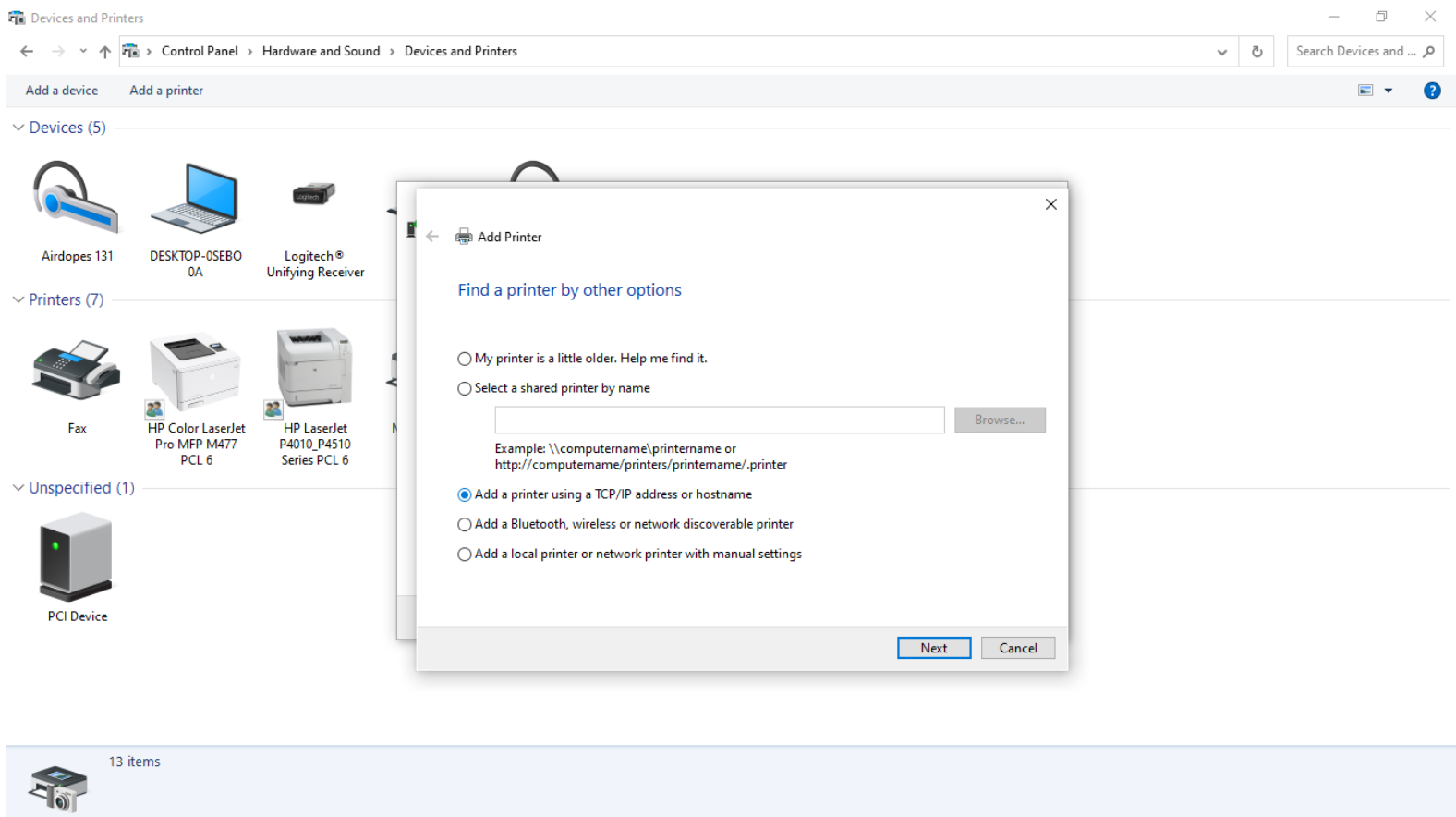
1. Go to the "Control Panel" and select "Devices and Printers". Click "Add a Printer"



2. Click on “The device that I want isn’t listed”



3. Select “Add a printer using a TCP/IP address or hostname”



4. Enter the IP address and the port name for the printer from the Panda website

The screenshot shows a web-based configuration page for network settings. On the left, there is a sidebar with 'UNM IT Links' including Wireless Configuration, E-mail Configuration, Web Hosting, Computer Pods, Software Purchase, and NetID Account. The main content area is titled 'Setup Information' and contains a table of printer drivers. An 'Add Printer' dialog box is overlaid on top, prompting the user to 'Type a printer hostname or IP address'. The dialog box has the following fields: 'Device type' set to 'TCP/IP Device', 'Hostname or IP address' set to '64.106.63.198', and 'Port name' set to 'HP Color LaserJet MFP M477'. There is also a checkbox for 'Query the printer and automatically select the driver to use' which is currently unchecked. At the bottom of the dialog are 'Next' and 'Cancel' buttons. Below the dialog, under the heading 'Installation Instructions', there are three numbered steps: 1. Click on the Driver Link to download the zipped driver file from the above table, and unzip it, noting the location; 2. Bring up the Printers and Faxes control panel dialog box; 3. Select Add a printer.

Network Configuration Information
SOPs
Web-enhance your course

UNM IT Links
[Wireless Configuration](#)
[E-mail Configuration](#)
[Web Hosting](#)
[Computer Pods](#)
[Software Purchase](#)
[NetID Account](#)

Setup Information

← Add Printer

Type a printer hostname or IP address

Device type: TCP/IP Device

Hostname or IP address: 64.106.63.198

Port name: HP Color LaserJet MFP M477

Query the printer and automatically select the driver to use

Next Cancel

Installation Instructions

1. Click on the Driver Link to download the zipped driver file from the above table, and unzip it, noting the location
2. Bring up the Printers and Faxes control panel dialog box
3. Select Add a printer

5. Select the driver of the printer that was downloaded from the PandA website and click on “Next” to finish the installation process.

The screenshot shows a Windows 'Add Printer' dialog box titled 'Install the printer driver'. The dialog box is overlaid on a 'Setup Information' window. The 'Add Printer' dialog box has a 'Manufacturer' list with 'HP' selected, and a 'Printers' list with 'HP Color LaserJet Pro MFP M477 PCL 6' selected. Below the lists are buttons for 'Windows Update' and 'Have Disk...'. At the bottom of the dialog box are 'Next' and 'Cancel' buttons. The background window shows a table of printer drivers with columns for bitness, manufacturer, and model. The table includes entries for Ricoh Pro and HP M477. Below the dialog box, 'Installation Instructions' are visible, listing steps for downloading and installing the driver.

Network Configuration Information
SOPs
Web-enhance your course

UNM IT Links
[Wireless Configuration](#)
[E-mail Configuration](#)
[Web Hosting](#)
[Computer Pods](#)
[Software Purchase](#)
[NetID Account](#)

Setup Information

Add Printer

Install the printer driver

Choose your printer from the list. Click Windows Update to see more models.
To install the driver from an installation CD, click Have Disk.

Manufacturer	Printers
Generic	HP Color LaserJet Pro MFP M477 PCL 6
HP	HP LaserJet P4010_P4510 Series PCL 6
Microsoft	

This driver is digitally signed. [Tell me why driver signing is important](#)

Windows Update Have Disk...

Next Cancel

Installation Instructions

1. Click on the Driver Link to download the zipped driver file from the above table, and unzip it, noting the location
2. Bring up the Printers and Faxes control panel dialog box
3. Select Add a printer

64 bit), Ricoh Pro
21: This printer driver is e. We are working on a
64 bit) Ricoh Pro
MFP M477
Choose the PCL 6
Choose the PCL 6
dn (32 bit) HP
64 bit) HP
Windows (32
others